



INC.

AROUND MUD ISLANDS RACE 2019

Saturday 26 October

ALT (due to postponement only) Sunday 27 October

SAILING INSTRUCTIONS

1. RULES

- a. The rules are as defined in the Racing Rules of Sailing 2017-2020. (This includes class rules and YV CBH rules)
- b. YA Special Regulations Part 1 Cat 7 applies to Coutu Boats and Cat 5 applies to all other boats.
- c. The Coutu Boat Association CBA has approved changes to class rule 14.3 to allow the use of electronic navigational aids in this race. The internet may be accessed to view weather observations.

2. ENTRIES

- a. Queenscliff Lonsdale Yacht Club Inc. (QLYC) reserves the right to reject any entry.
- b. All those taking part in QLYC races, do so at their own risk and responsibility. The QLYC is not responsible for the seaworthiness of a yacht whose entry is accepted or the sufficiency or adequacy of its equipment. Attention is drawn to Fundamental Rule Part 1, 4 that states: "A boat is solely responsible for deciding whether or not to start or to continue racing." By participating in a race conducted under these rules, each competitor and yacht owner agrees:
 - (i) To be governed by the rules.
 - (ii) To accept the penalties imposed and other action taken in accordance with rules, subject to the appeal and review procedures provided in them, as the final determination.
 - (iii) Not to resort to any court or tribunal not provided by the rules.

3. NOTICES TO COMPETITORS & CHANGES IN SAILING INSTRUCTIONS

Notices to competitors and any changes to sailing instructions shall be posted on the official Notice Board by 09:30 hrs. Sat. 26/10/18 at **Race Headquarters** located in front of the Marina Office, Queenscliff.

4. SIGNALS MADE ASHORE

Signals made ashore shall be displayed at Race Headquarters.

5. SIGN ON AND BRIEFING

Skippers shall sign on at Race HQ between 09:00 and 09:30 hrs. After which a briefing will be held to relay any changes to the sailing instructions or course.

6. RACE SCHEDULE & DIVISIONS

Division 1 will start at 1100 hours; the divisions shall be as follows.

Division / Class flag	Couta Boat Div / CBH Range/Performance Handicap Range
Numeral 1	Couta Boat Division 2/ Keel to 0.600
Numeral 2	Trailables & Couta Boat Division 1, 0.640 to .719/ Keel 0.600 to 0.700
Numeral 3	Keel above 0.700/ Trailable 0.720 and above

7. THE START

The race will be started in accordance with rule 26 with divisions starting at 10-minute intervals between actual start times, in the order listed in section 6.

- a. The start line will be between a RED/ORANGE buoy approximately 3 cables ENE of the Queenscliff entrance and a staff flying the QLYC burgee (*blue triangle with white swan*) on the Committee Vessel anchored at the starboard end of the line.
- b. A safety or crowding buoy may be laid a short distance from the starting vessel, but not necessarily exactly on the line. No yacht shall pass between this buoy and the starting vessel at any time.
- c. In addition to rule 24, boats whose warning signal has not been made shall keep clear of the starting area and of all boats whose warning signal has been made.

8. RECALLS

Rule 29 will be used for Individual and General recalls.

9. THE COURSE. (*refer to section 13. Hazards*)

- Start in an Easterly direction.
- Round West Channel Pile No.3 **to port (38° 15.98 S 144°42.62 E)**, and then proceed up Symonds Channel (approx. 060°T.) to a laid cylindrical blue and white buoy with a yellow and black QLYC banner (**38,13.6706S 144,48.6339E**) approximately 200 meters to the EAST of the Symonds Channel pile at the North East end of Symonds Channel. Leave this buoy **to starboard**.
- Proceed to a laid cylindrical blue and white buoy with yellow and black QLYC banner (approx. 175°T) at the North-East end of the Pinnacle Channel. (**38°16.80'S 144°48.80'E**) Leave this buoy **to starboard**.
- Follow a course approximately 240°T down the Pinnacle Channel to round South Channel No.6 (a black pile with a port hand channel top mark) **to starboard**.
- Continue down the South Channel and round Pile No.2 **to starboard**.
- Proceed to the finish line North East of the Queenscliff Creek.

The Queenscliff Coast Guard vessel CG09 will lay the buoys at the North end of the Symonds and the Pinnacle Channels, and stand by while the fleet passes.

10. THE FINISH.

The finish line will be laid at the start line North East of Queenscliff Creek. The finish line will be between a laid RED buoy at the port end, and the staff flying the QLYC burgee on the Committee boat, at the starboard end.

Boats are requested not to re-cross the finish line following their finish.

11. RETIRING AND SIGNING OFF

Boats retiring **MUST** notify the Race Committee prior to leaving the racecourse on **VHF channel 72** (alternatively phone the Officer of the Day).

Skippers shall be deemed to have **signed off** as they cross the finishing line. Signing off in the appropriate manner shall be a declaration of observance of the rules.

12. HAZARDS

- a. Hazards in the form of sandbars, reefs, etc. occur over the course with extensive sandbars and tidal flats in the vicinity of Swan Island, Symonds Channel and around Mud Islands. Refer to AUS158 for detail. Shoaling in some areas may mean the location and depth of sandbars may not be as exactly indicated on the chart.
- b. The course is in an area, which experiences strong tidal currents. This can be a particular hazard in the vicinity of fixed structures and piles.
- c. Skippers are warned that the course passes across and along shipping channels and should keep a watch for vessels at all times.
- d. **The Sorrento-Queenscliff car ferry's** approach Queenscliff at approximately 10:40; 11:40; 12:40 etc. and is scheduled to depart on the hour at 11:00; 12:00; 13:00 etc.
- e. A number of Dive Charter boats and fishing operate in the area these include snorkel groups common around the Annulus (the rocks SW of the Wedge.)

13. TIME LIMIT

Boats still racing when the Time Limit expires at 16:00 shall be scored DNF.

14. SHORTENED COURSE

Will be signalled in accordance with rule 32. **Please note** if the course is shortened at either of the South Channel Pile marks (2,4 or 6), that the Committee Vessel will be lying to the North of the pile (out of the channel). **The Finish** will be between the pile and the S Flag on the Committee Vessel. **The Committee Vessel is to be left to starboard.**

15. PROTESTS

- a. Protests shall be lodged at the Race Headquarters at the QLYC Clubhouse within two hours of the last boat finishing. Forms will be available at Race Headquarters.
- b. Protest notices will be posted at Race headquarters within 30 minutes of the protest time limit to inform competitors that there is a hearing to which they are a party or named as witnesses. This shall constitute official notice to all parties.
- c. Protests shall be heard in approximately the order of receipt at a time to be announced.

16. SCORING

- a. Current, Keel / Trailable performance Handicaps and Performance Handicaps of the Couta Boat Club at race day shall apply.
- b. Where a boat does not have a current Handicap the OOD will allot a provisional handicap. No correspondence will be entered into over any allotted handicap.
- c. Results will be displayed at QLYC Clubhouse as early as possible after the race and on the club website.

17. ALTERNATIVE PENALTIES, COUTA BOATS

- a. For Couta Boats rules 44.1 and 44.2 are changed so that only a part-turn is required.
- b. On a leg to a windward mark, a part turn is a gybe and luffing to a close-hauled course as soon as reasonably possible.
- c. On other legs a part turn is a tack and bearing away as soon as reasonably possible to more than 90 degrees from the true wind.

18. PRESENTATION OF TROPHIES

Presentation of trophies will be presented at QLYC presentation night.

19. TROPHIES

The Borough of Queenscliffe Perpetual Trophy

(Performance Handicap Keel and Trailable yachts_1st, 2nd and 3rd.)

Couta Boat Trophy. 1st, 2nd and 3rd (Min 4 starters).

1st on overall elapsed time (Couta or Keel / Trailable)

20. SAFETY REGULATIONS

- a. Boats may be inspected for compliance with the safety regulations.
- b. Crew shall be at least one adult and one person over 14 years of age.
- c. No trapeze allowed.
- d. The appropriate Chart for this race is AUS 158 and should be carried.
- e. Crews of boats without lifelines shall wear PFDs or life jackets.
- f. Weather reports will be available from Queenscliff Coast Guard **VMR 369**.
- g. Skippers are reminded of ISAF Fundamental Rule 1, Rendering Assistance. Redress for time so lost may be requested using a protest format.

21. RADIO

The Queenscliff Lonsdale Yacht Club Committee boat rescue boat "Swan", and **Queenscliff Coast Guard vessel CG9** will maintain radio watch on channel **72 and 16VHF**.

22. LAUNCHING

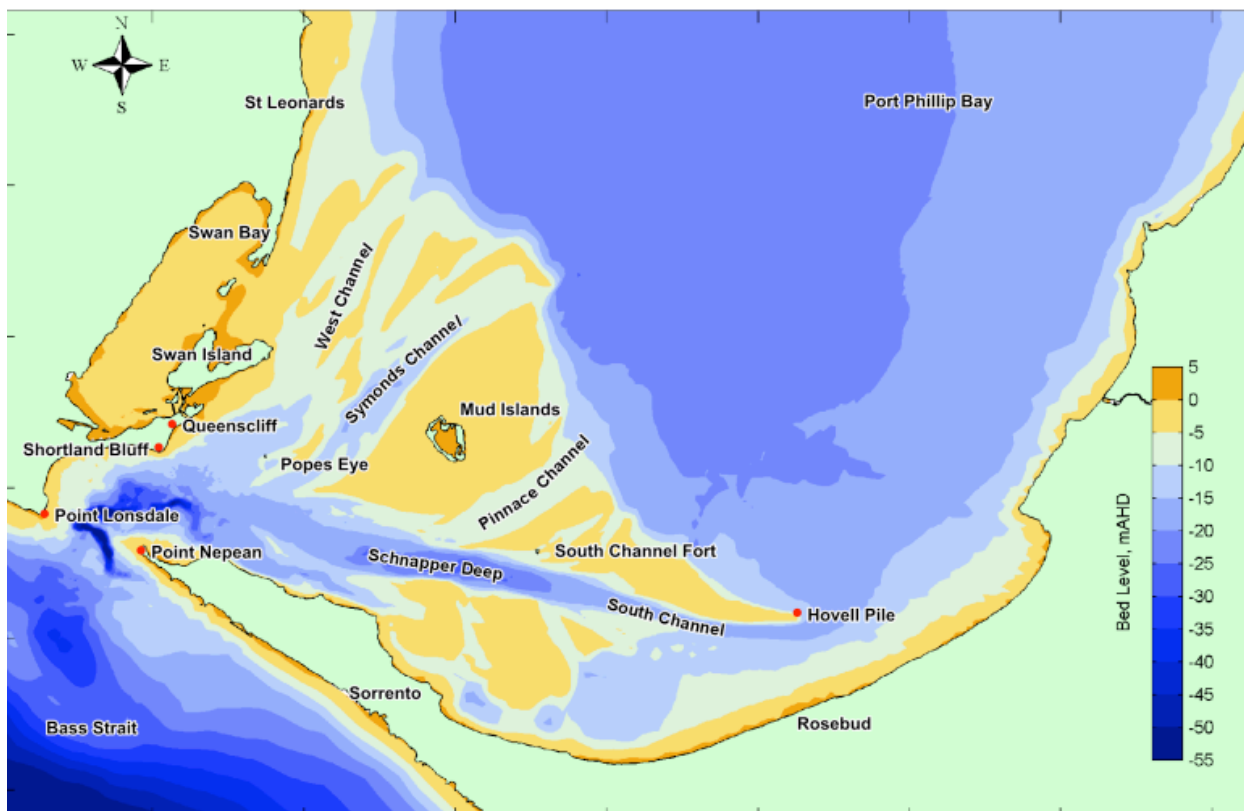
There is an excellent launching ramp at the North end of Hesse St., the main street of Queenscliff. A 24-hour launch/park fee applies and those competitors who wish to park more than one day should leave their boat trailer in the **Queenscliff Lonsdale Yacht Club car park located on Swan Bay, near the corner of Nankervis Pde and King St. (Melways map 236, E5)**. Sheltered moorings are available in the Marina.

The Sorrento boat ramp is the closest launching facility on the Mornington Peninsula.

23. CONTACT NUMBERS

POSITION	NAME	NUMBER
Officer Of Day - SAT	Frank McMahon	0410 006 390
Officer Of Day - SUN	Jennifer Gilbert	0417 314 641
Commodore	John Barry	0408 955 299
Club Captain	Ian Campbell	0439 626 630
Queenscliff Coast Guard	Coast Guard Headquarters	5258 2222

Not a navigational map



Flag Description	Flag
AP - Postponement	
Pennant 1 Division 1	
P - Preparatory signal	
Pennant 2 Division 2	
Pennant 3 Division 3	
X - Individual recall	
First Substitute - General recall	
S - Shortened Course	
C - Changing the Next Leg	
N - Abandonment Signal	